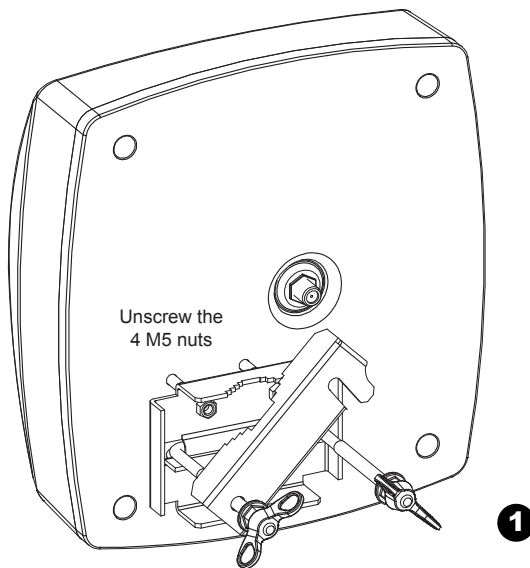


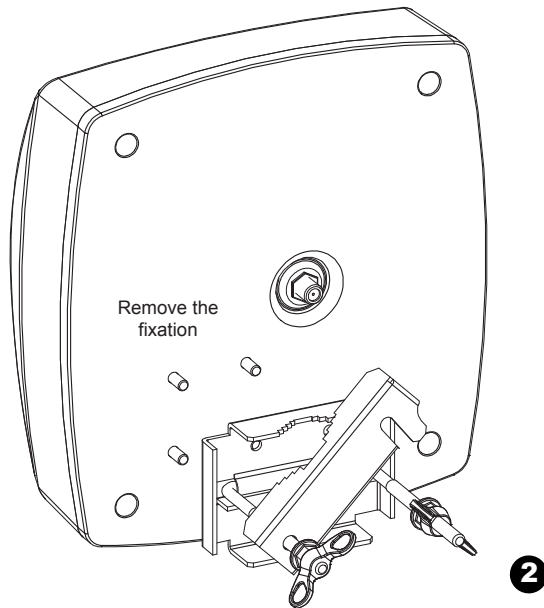
TV PATCH ANTENNA

POLARIZATION CHANGING

Horizontal polarization fixing
(Default factory fixing)

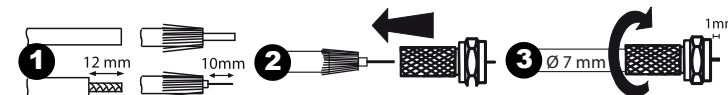


Remove the
fixation

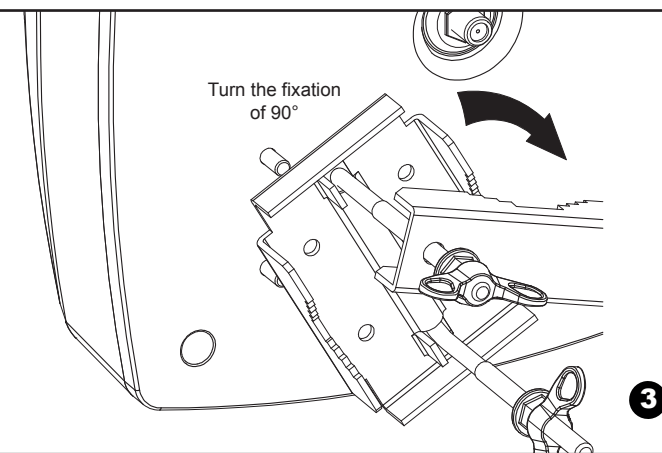


F Plug installation (not included) + waterproofness

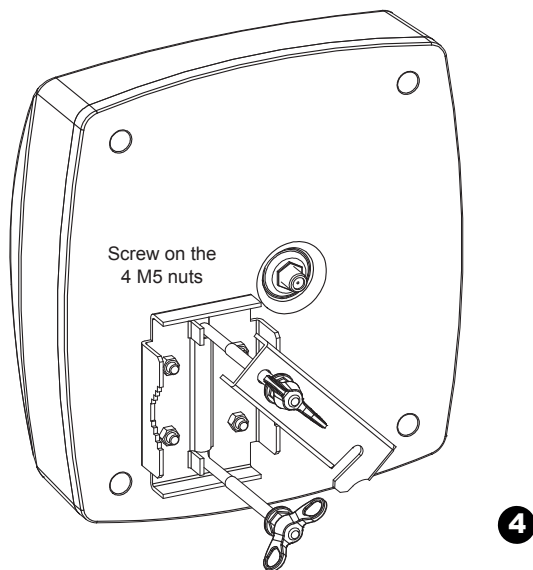
Waterproof cap installation
(not included)



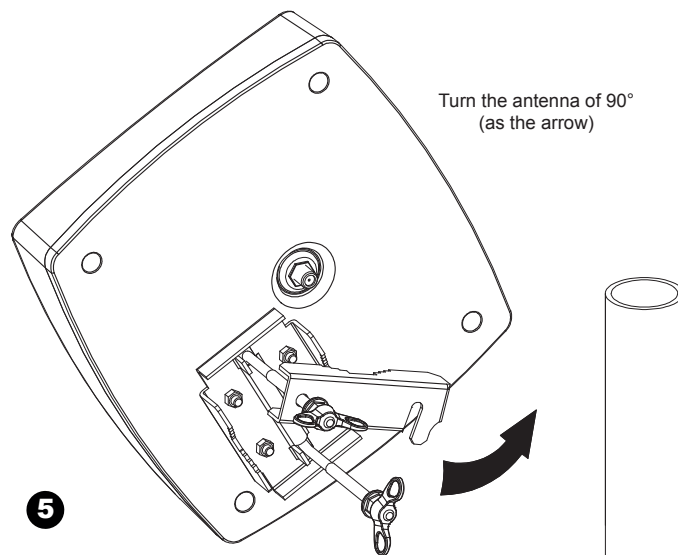
Turn the fixation
of 90°



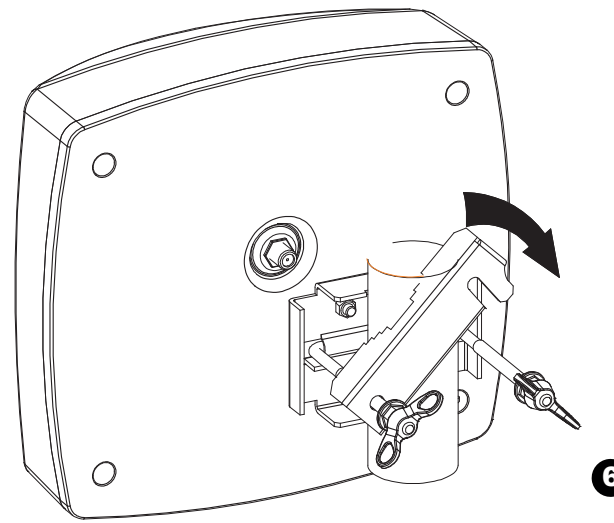
Screw on the
4 M5 nuts



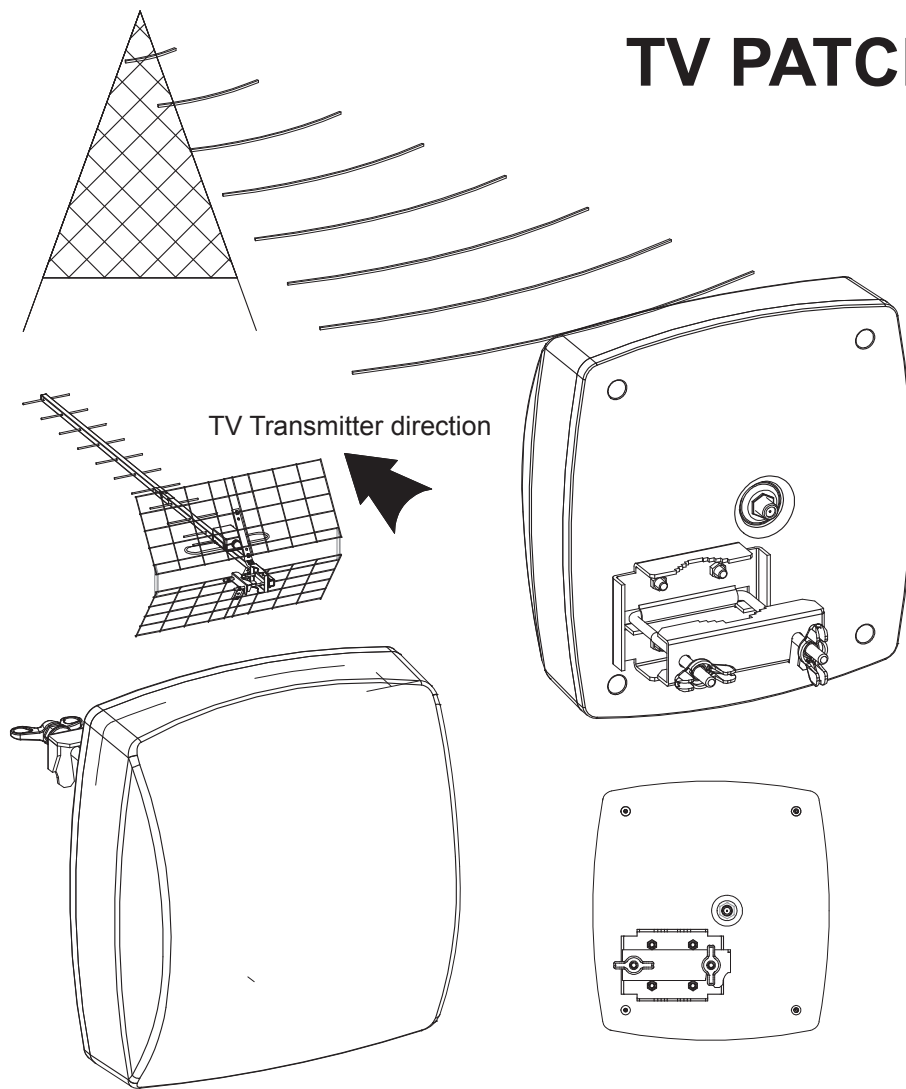
Turn the antenna of 90°
(as the arrow)



Vertical polarization fixing



TV PATCH ANTENNA



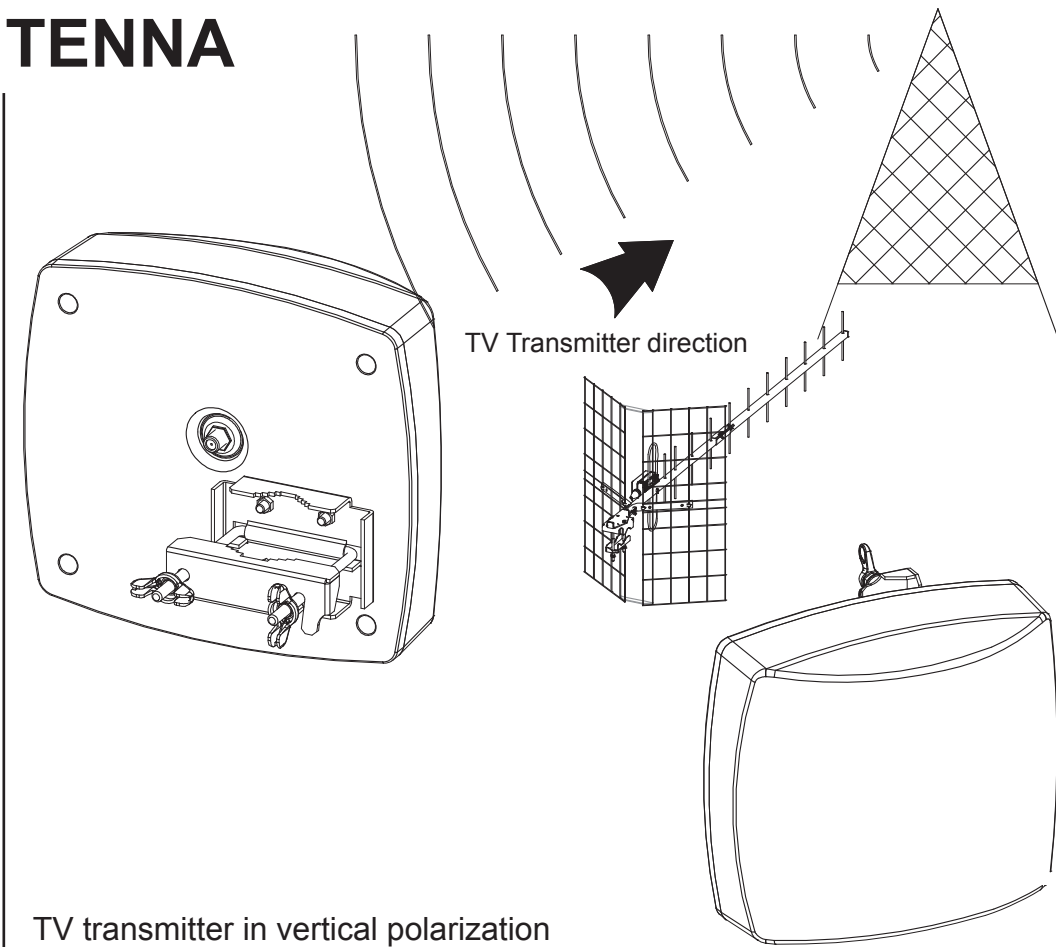
TV transmitter in horizontal polarization (default mounting)

Installation of TV Patch antenna on 230V socket :

Patch antenna is connected using "F" plugs cable (not included).
First, connect "F" plug cable on the antenna and mount the antenna on its mast / fixation.
Then, connect the other extremity of the "F" plugs cable on the 12V injector ("F" jack)
To finish, insert the IEC 9,52 mm plug of the 12V injector directly ont the IEC input of your TV.
Now, you just need to connect the power supply on the 230V socket.

Installation of TV Patch antenna on 12V battery :

Connection is made as indicated above with the following exception : **DON'T CONNECT THE 230V POWER SUPPLY ON 230V SOCKET**, but connect the Jack cable to a 12V source (Car battery) respecting the polarity :
+ (black with white dots wire) and - (full black wire).



TV transmitter in vertical polarization

